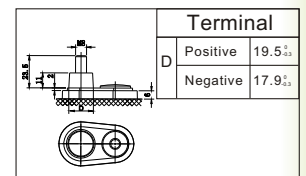
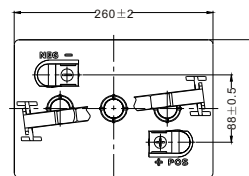
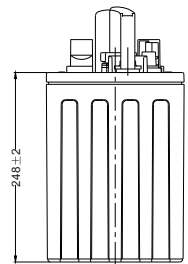
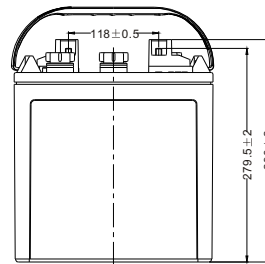


Physical Specification

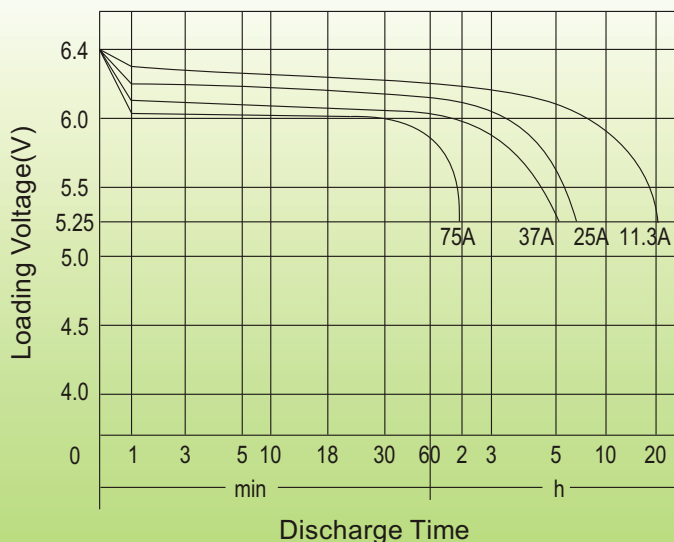
Nominal Voltage	6V
Nominal Capacity(20HR)	225Ah
Nominal Capacity(5HR)	185Ah
Length	260±2mm(10.24inches)
Width	180±2mm(7.09inches)
Container Height	248±2mm(9.76inches)
Total Height	279.5±2mm(11.00inches)
Dry Weight	Approx 20.0Kg(44.1lbs)
Wet Weight	Approx 27.0Kg(59.5lbs)
Acid	1.280±0.015g/cm ³ (25°C)
Standard Terminal	LPT
Container Material	PP



Electrical Specification

Rated Capacity	20 hour rate(11.3A)	225Ah
	5 hour rate(37.0A)	185Ah
Reserve Capacity	25Amps	445min
	75Amps	115min

Discharge Characteristics(25°C , 77°F)



Charge Method

Initial Charge:

- ① 0.1C₂₀ (A) charging 15h
- ② 0.05C₂₀ (A) charging 10h

The temperature of the battery should be below 50°C during charging.

Supplement Charge:

a) Charging at a constant voltage of 7.35~7.5V/cell and a limited current 0.25C₂₀ (A) until the electrolyte density up to 1.280g/cm³ (30°C) and the current not change for 3 hours.

b) Charge with constant current 0.1C₂₀ (A) until the voltage between 7.8~8.4V/cell, and voltage maintains for 3 hours and not change.

Two method optional